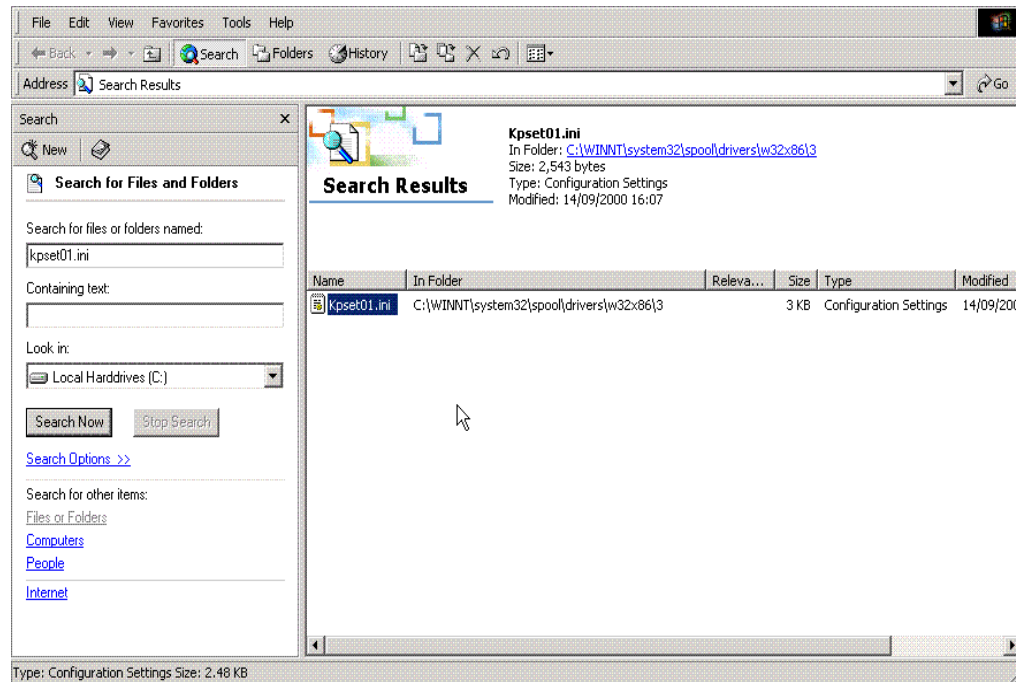


**Note: This applies to OS Windows 2000 and Windows NT.**

**How to install TMT Version of Driver if original Panasonic Driver was installed by accident before and TMT Media settings are missing when installing TMT Driver:**

1. Uninstall/delete old Driver in the Printer Folder.
2. Delete KPSET01.INI file in Windows System 32 Folder. > see below how to find it.



3. Re-intsall TMT Driver from SpaceOne CD via the SetUp.exe file.