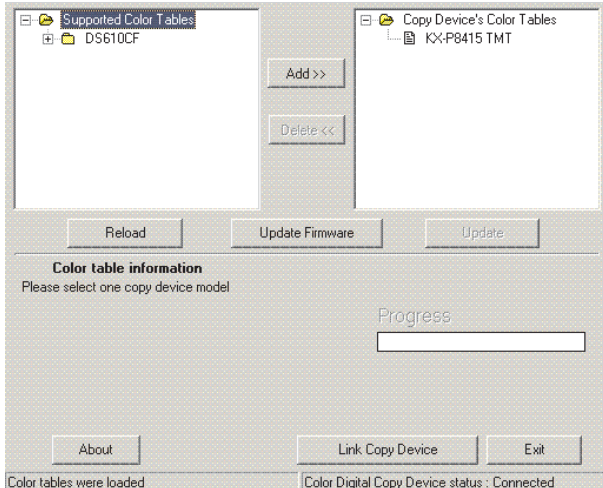


How to install/up-date FirmWare and ColourTable of DS610CF:

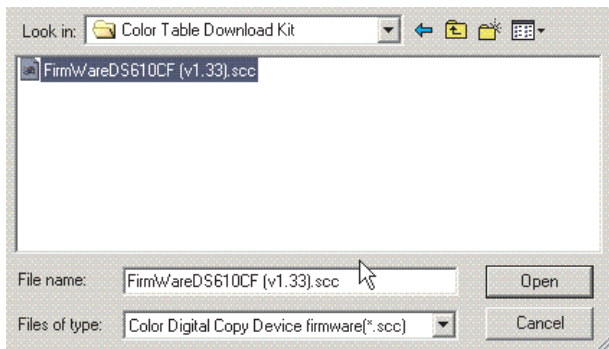
Connect DS610CF via Parallel Cable and power up. Install Driver on the PC via SetUp.exe. Install Color Table Download Kit via 'ColorTableDownloadKit1.22.exe'. Open Color Table Download Kit which will look like the window below. Follow Step 1. thru 7.

Note: If Colour Table Download Kit fails to recognise DS610CF you might have to change your LPT1 BIOS or CMOS (under Integrated Peripherals) settings to ECP or EPP. With older model PC you might have to unselect 'bi-directional'.

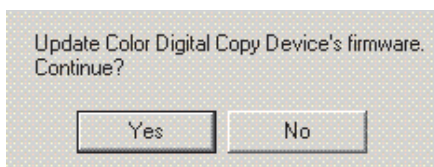
1. Click Update Firmware



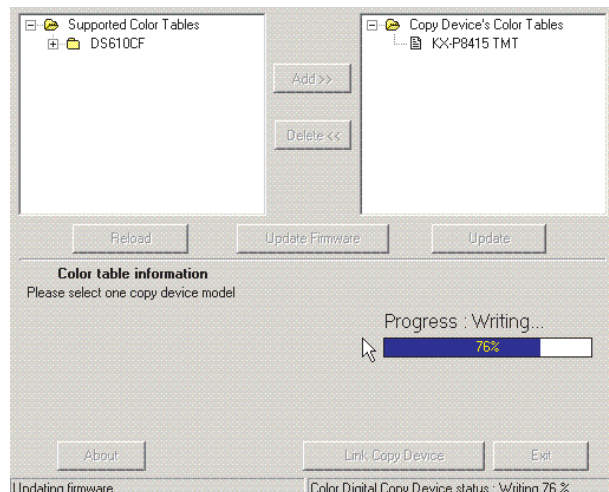
2. Click FirmWare~.scc file and click Open.



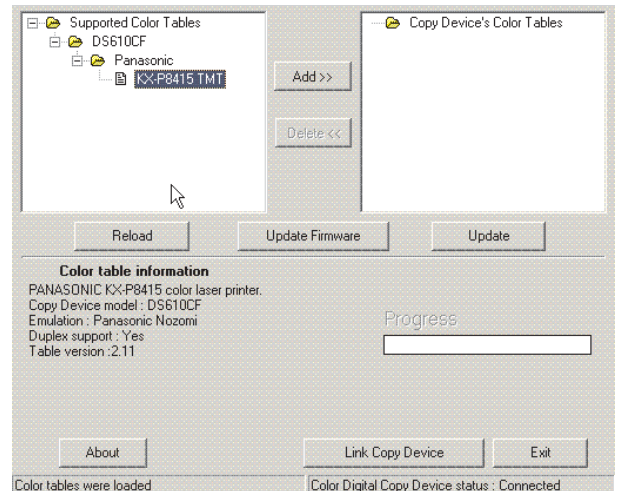
3. Click Yes.



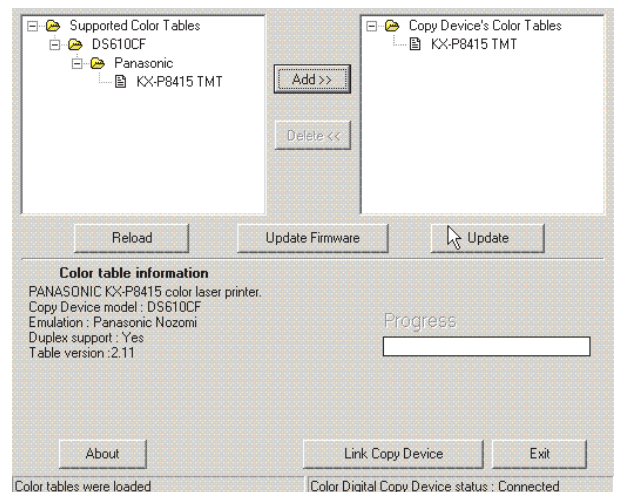
4. Progress Indicator will show when Update is completed. Now click 'Link Copy Device'.



5. First, select all Colour Tables in the right hand window and click 'Delete'.. Then select KX-P8415 TMT in the left hand window and click 'Add'.



6. Click Add. Click Update.



7. Progress Indicator will show when Update is completed. Exit. Done.

